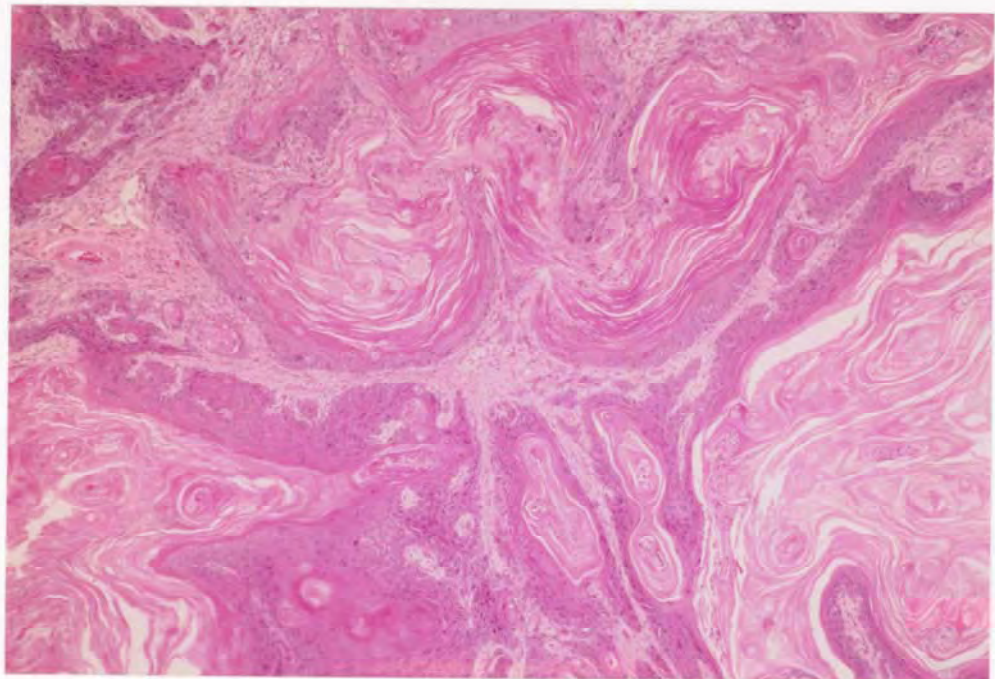


1,4-ジオキサンのラット及びマウスを用いた  
経口(混水)投与によるがん原性試験

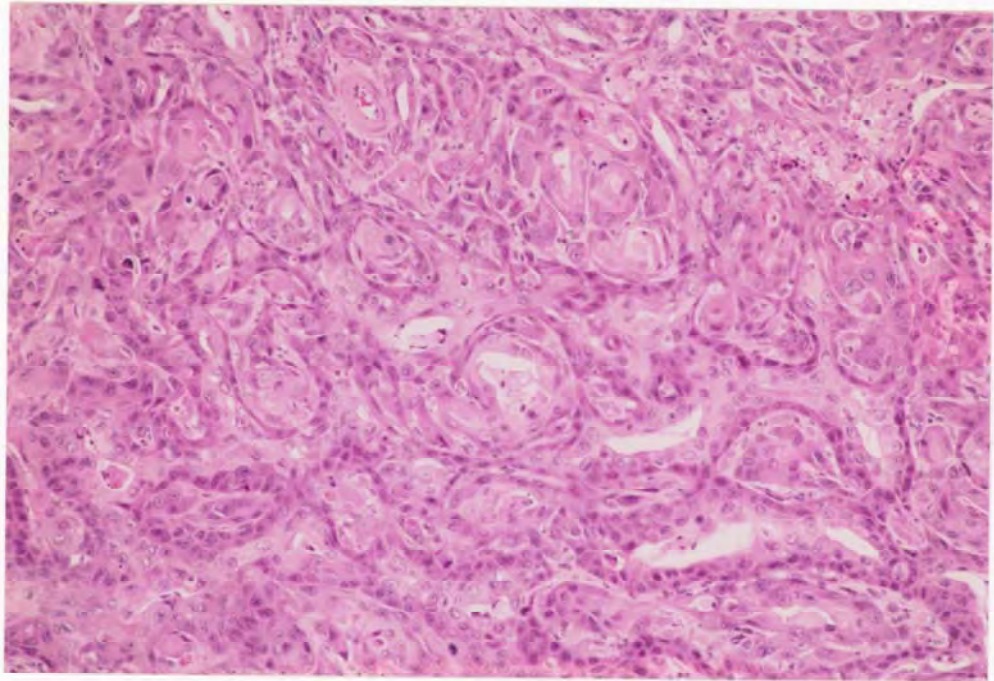
## PHOTOGRAPHS



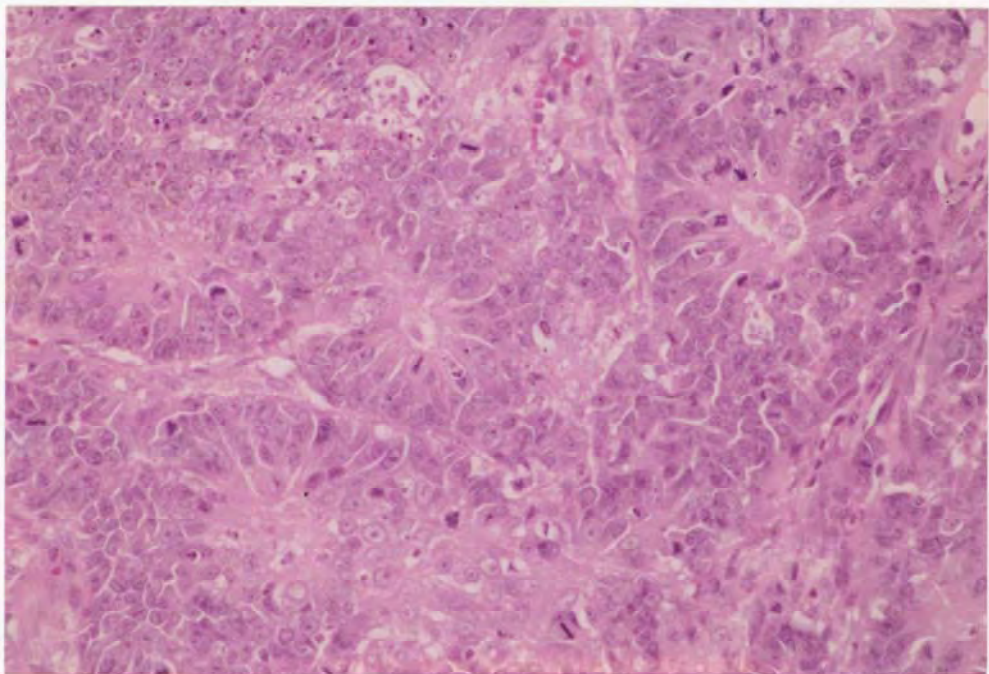
PHOTOGRAPH 1 NASAL MASS  
RAT, FEMALE, 5000ppm, ANIMAL NO.0063-2336



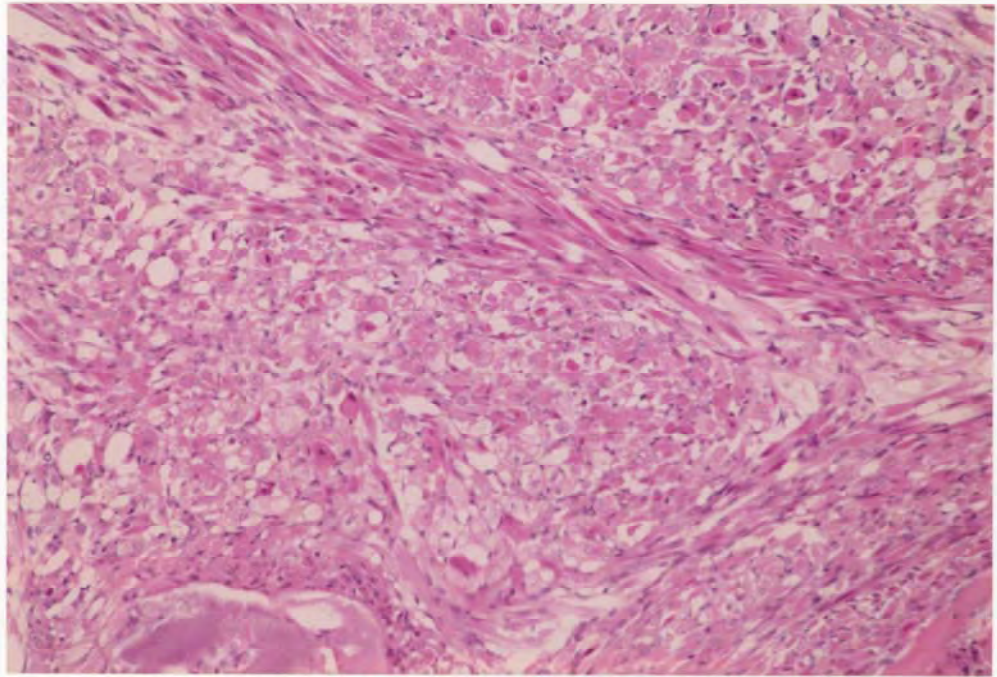
PHOTOGRAPH 2 NASAL CAVITY (LEVEL 2),  
SQUAMOUS CELL CARCINOMA (WELL-KERATINIZING)  
RAT, FEMALE, 5000ppm, ANIMAL NO.0063-2336 (H.E., X60)



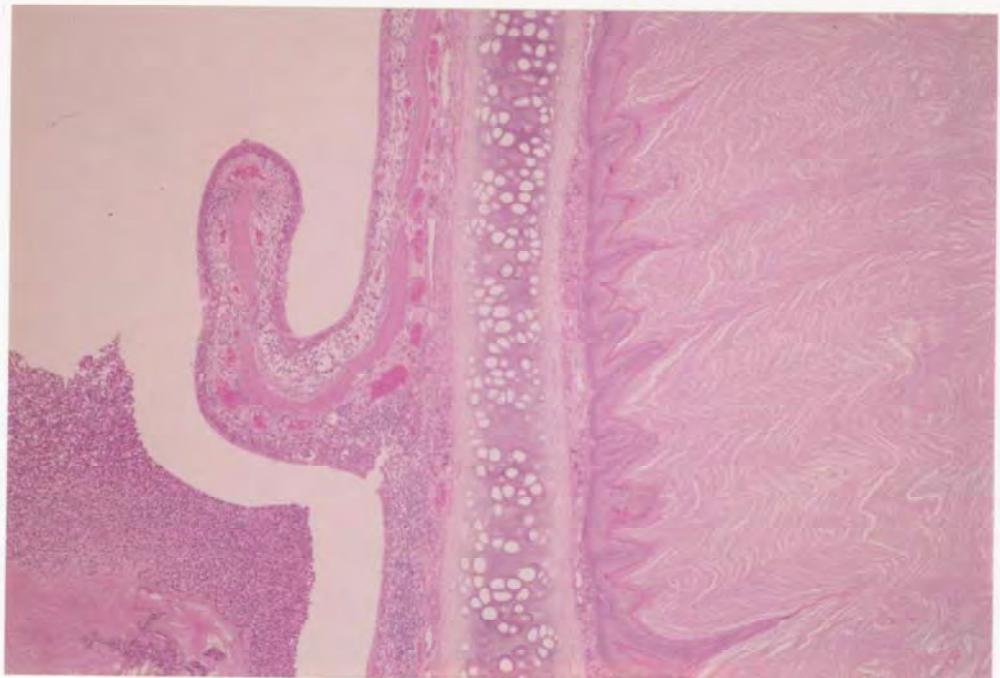
PHOTOGRAPH 3 NASAL CAVITY (LEVEL 2),  
SQUAMOUS CELL CARCINOMA (MUCO-EPIDERMOID)  
RAT, FEMALE, 5000ppm, ANIMAL NO.0063-2336 (H.E., X150)



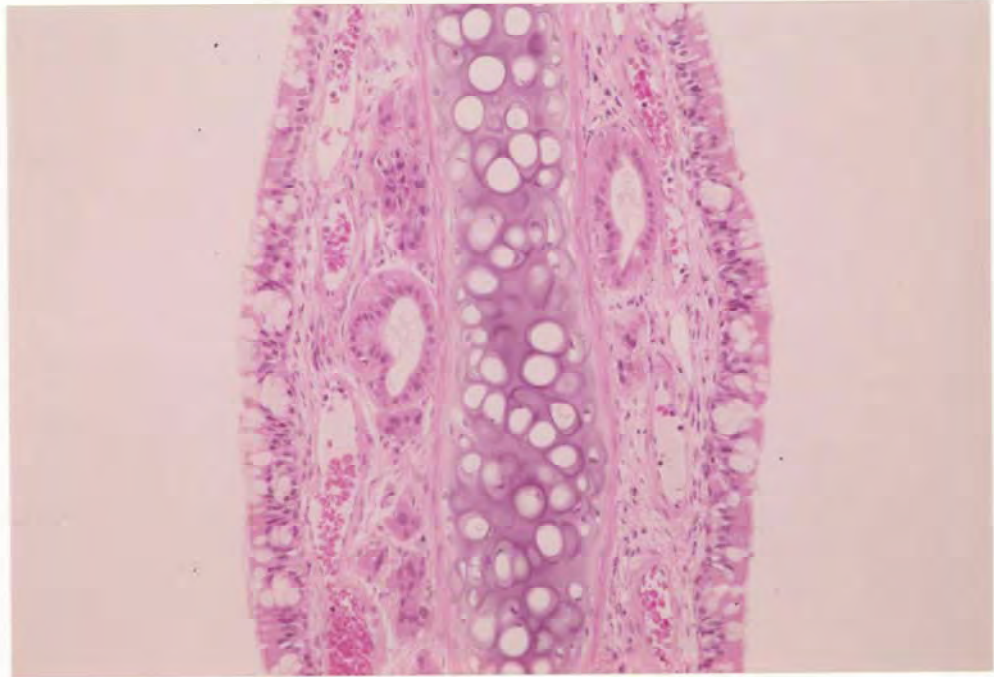
PHOTOGRAPH 4 NASAL CAVITY (LEVEL 2), ETHESIONEUROEPITHELIOMA  
RAT, MALE, 5000ppm, ANIMAL NO.0063-1323 (H.E., X300)



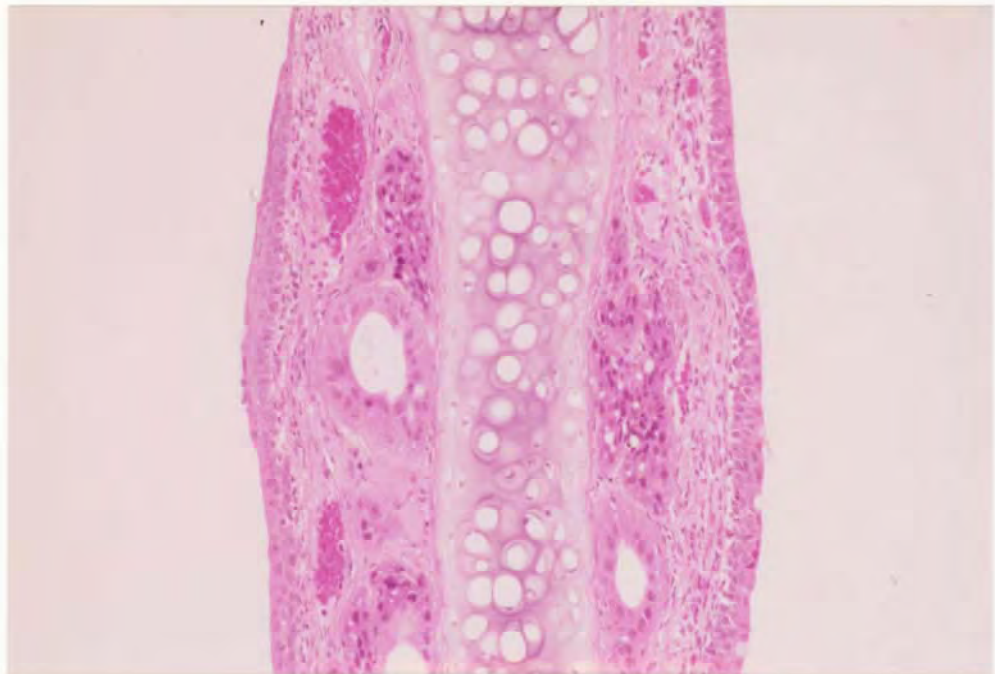
PHOTOGRAPH 5 NASAL CAVITY (LEVEL 2), RHABDOMYOSARCOMA  
RAT, MALE, 5000ppm, ANIMAL NO.0063-1318 (H.E., X150)



PHOTOGRAPH 6 NASAL CAVITY (LEVEL 2), SQUAMOUS CELL HYPERPLASIA,  
INFLAMMATION, ADHESION(NASOTURBINATE, NASAL SEPTUM)  
RAT, FEMALE, 5000ppm, ANIMAL NO.0063-2343 (H.E., X60)



PHOTOGRAPH 7 NASAL CAVITY (LEVEL 1, NASAL SEPTUM), NON-REMARKABLE  
RAT, FEMALE, CONTROL, ANIMAL NO.0063-2003 (H.E., X150)



PHOTOGRAPH 8 NASAL CAVITY (LEVEL 1, NASAL SEPTUM),  
SQUAMOUS CELL METAPLASIA,  
RAT, FEMALE, 5000ppm, ANIMAL NO.0063-2318 (H.E., X150)



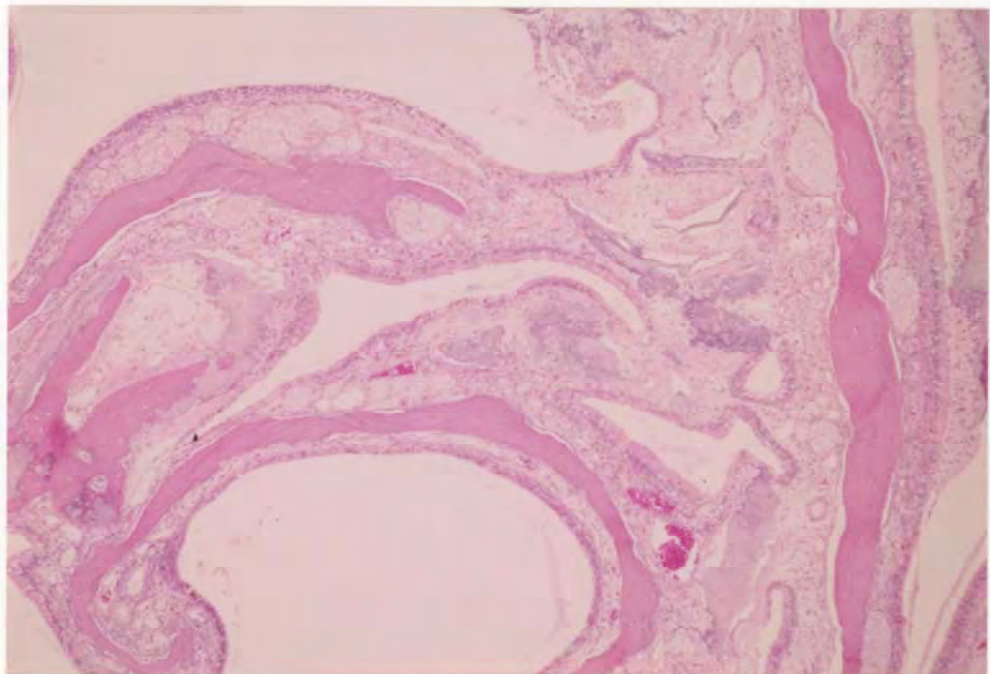
PHOTOGRAPH 9 NASAL CAVITY (LEVEL 2, DORSAL), NON-REMARKABLE  
RAT, FEMALE, CONTROL, ANIMAL NO.0063-2013 (H.E., X30)



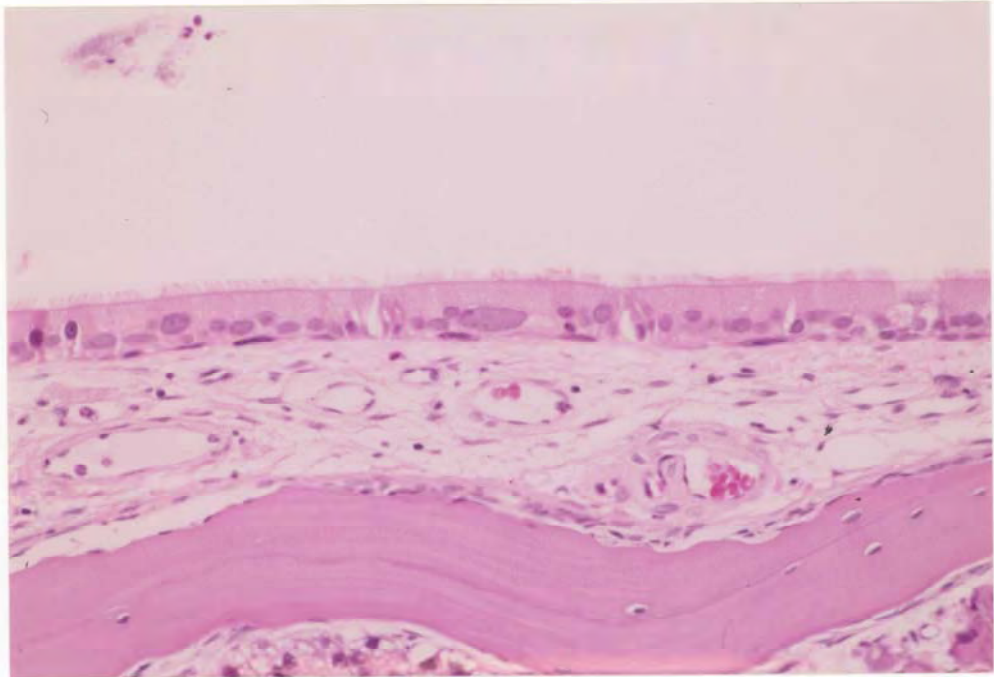
PHOTOGRAPH 10 NASAL CAVITY (LEVEL 2, DORSAL), HYDROPIC CHANGE: LAMINA PROPRIA  
WITH DEPOSIT OF CALCIUM, PROLIFERATION: NASAL GLAND,  
ADHESION (NASOTURBINATE, NASAL SEPTUM)  
RAT, FEMALE, 5000ppm, ANIMAL NO.0063-2343 (H.E., X30)



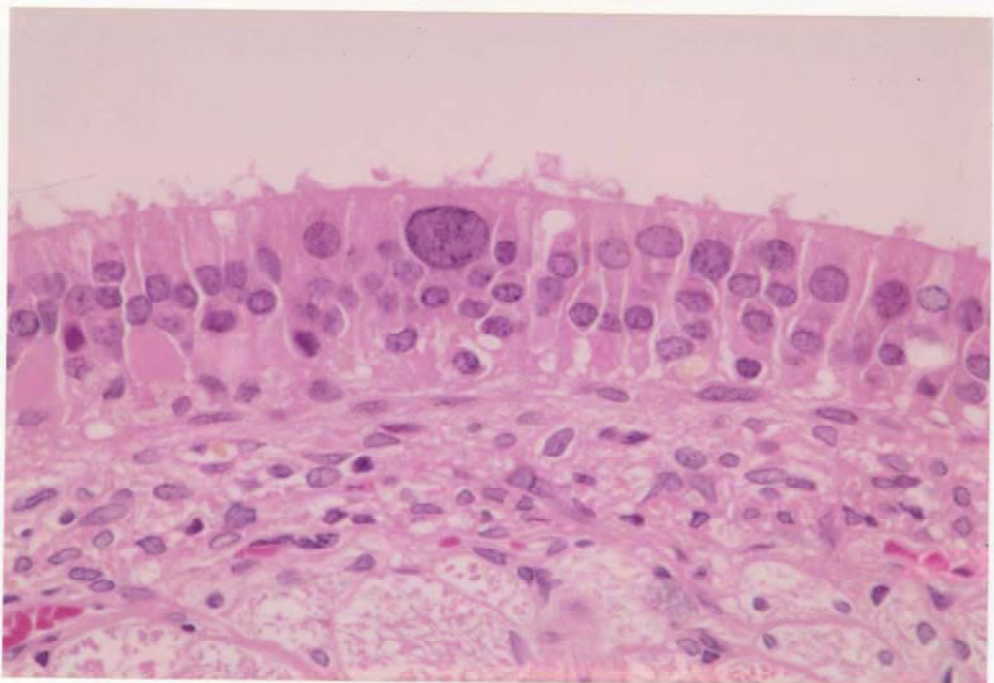
PHOTOGRAPH 11 NASAL CAVITY (LEVEL 3), NON-REMARKABLE  
RAT, MALE, CONTROL, ANIMAL NO.0063-1009 (H.E., X60)



PHOTOGRAPH 12 NASAL CAVITY (LEVEL 3), HYDROPIC CHANGE AND SCLEROSIS:  
LAMINA PROPRIA, ADHESION(ETHMOTURBINATE, NASAL SEPTUM),  
ATROPHY:OLFACTORY EPITHELIUM, RESPIRATORY METAPLASIA  
RAT, MALE, 5000ppm, ANIMAL NO.0063-1328 (H.E., X60)

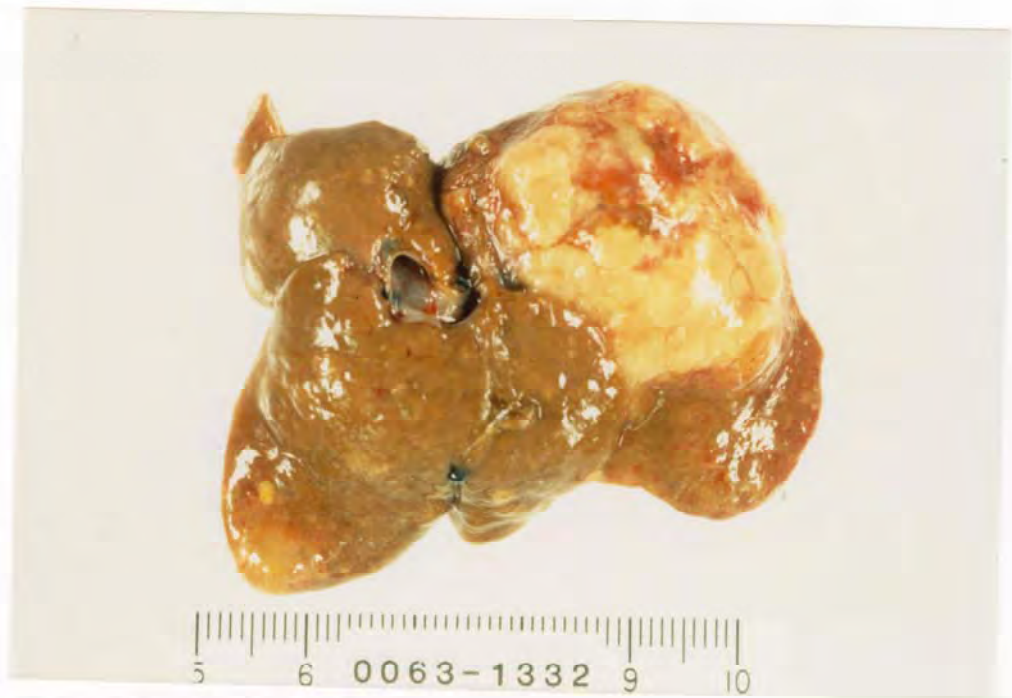


PHOTOGRAPH 13 NASAL CAVITY (LEVEL 2, NASOTURBINATE, RESPIRATORY EPITHELIUM),  
NUCLEAR ENLARGEMENT:RESPIRATORY EPITHELIUM  
RAT, MALE, 5000ppm, ANIMAL NO.0063-1307 (H.E., X300)

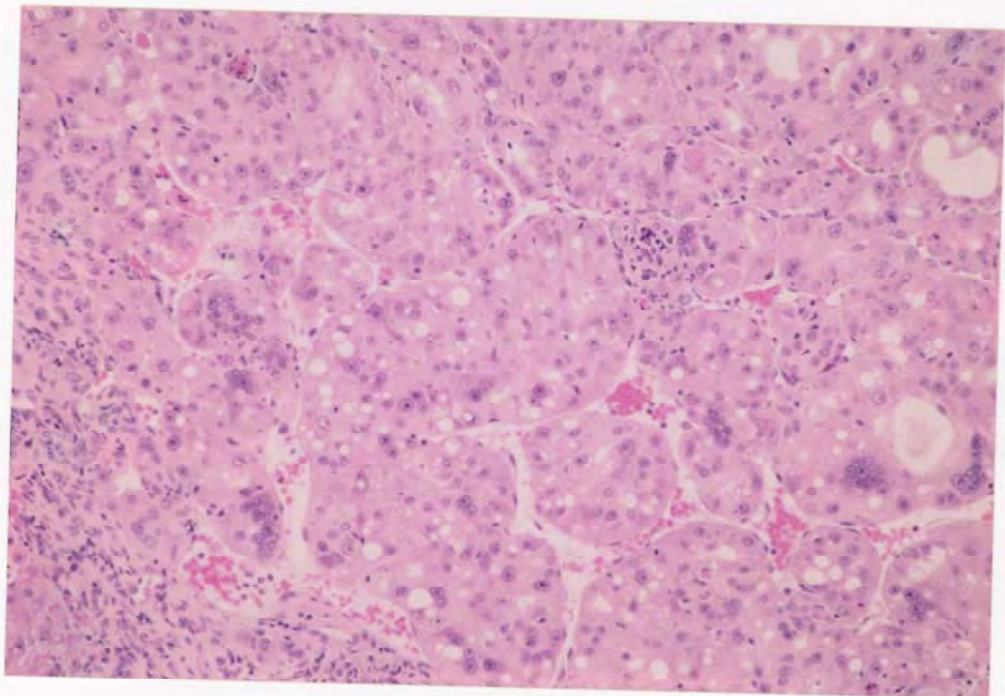


PHOTOGRAPH 14 NASAL CAVITY (LEVEL 3, ETHMOTURBINATE, OLFACTORY EPITHELIUM),  
NUCLEAR ENLARGEMENT:OLFACTORY EPITHELIUM(SUPPORTING CELL),  
ATROPHY:OLFACTORY EPITHELIUM  
RAT, MALE, 5000ppm, ANIMAL NO.0063-1307 (H.E., X600)

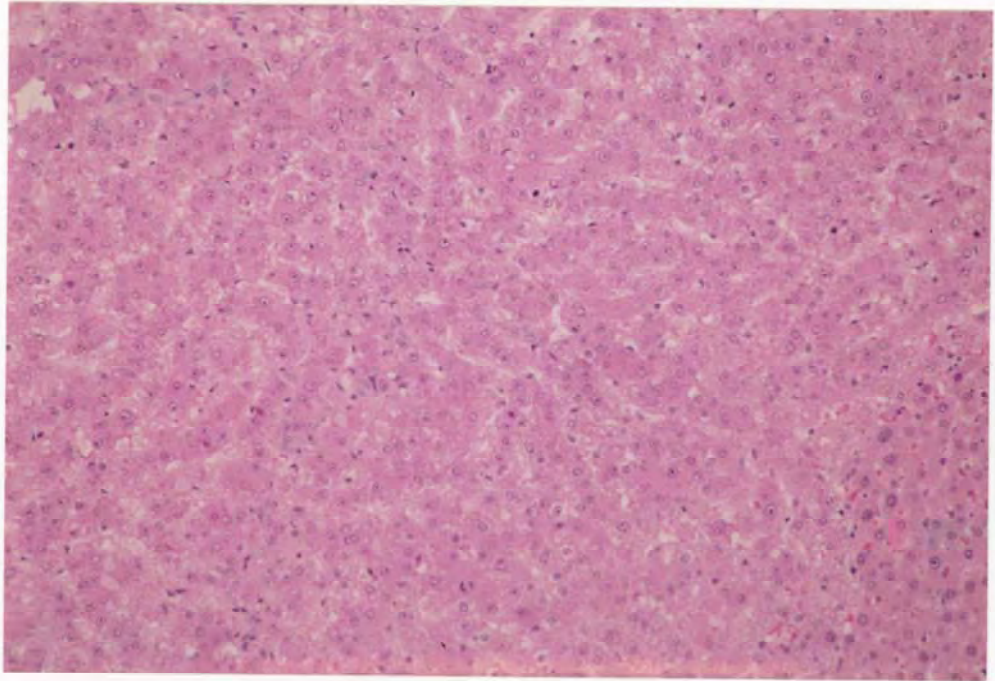




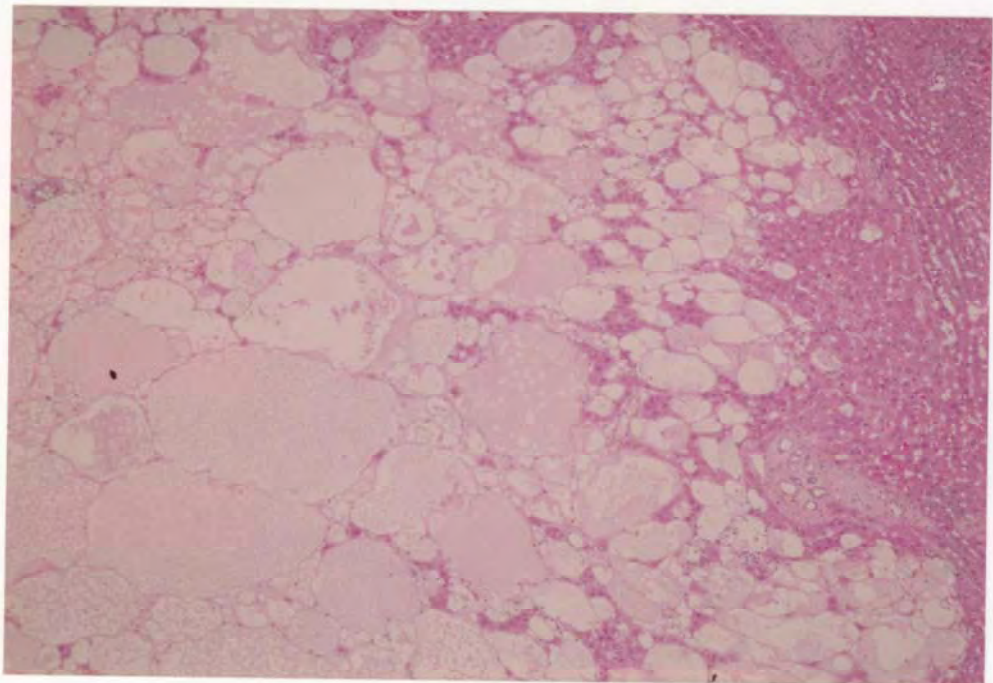
PHOTOGRAPH 15 LIVER, NODULE  
RAT, MALE, 5000ppm, ANIMAL NO.0063-1332



PHOTOGRAPH 16 LIVER, HEPATOCELLULAR CARCINOMA  
RAT, FEMALE, 5000ppm, ANIMAL NO.0063-2322 (H.E., X150)



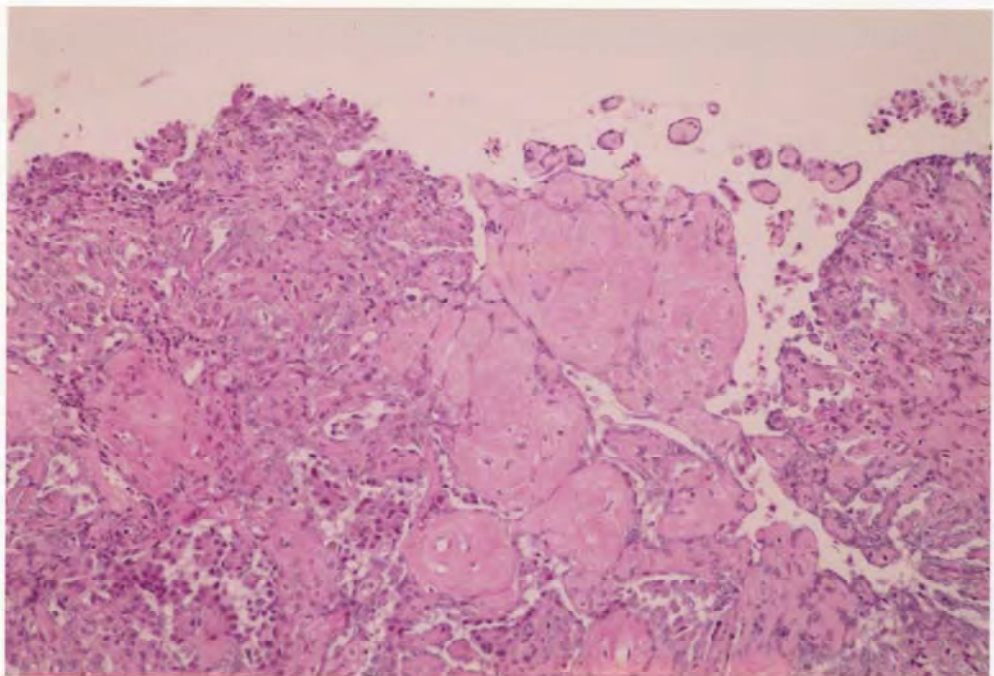
PHOTOGRAPH 17 LIVER, HEPATOCELLULAR ADENOMA  
RAT, FEMALE, 5000ppm, ANIMAL NO.0063-2310 (H.E., X150)



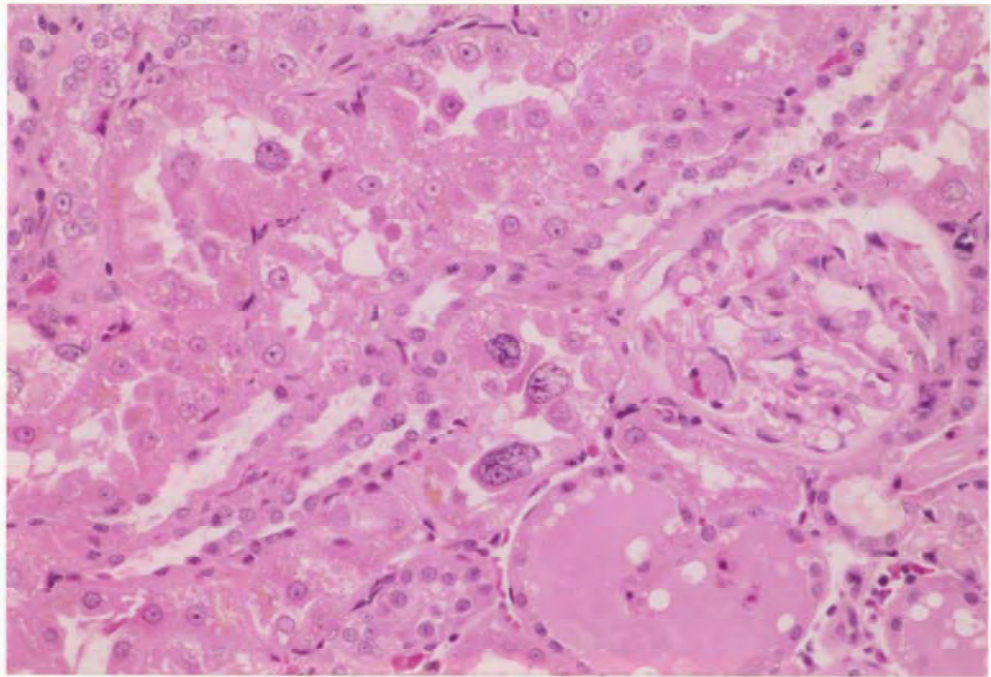
PHOTOGRAPH 18 LIVER, SPONGIOSIS HEPATIS  
RAT, MALE, 5000ppm, ANIMAL NO.0063-1338 (H.E., X60)



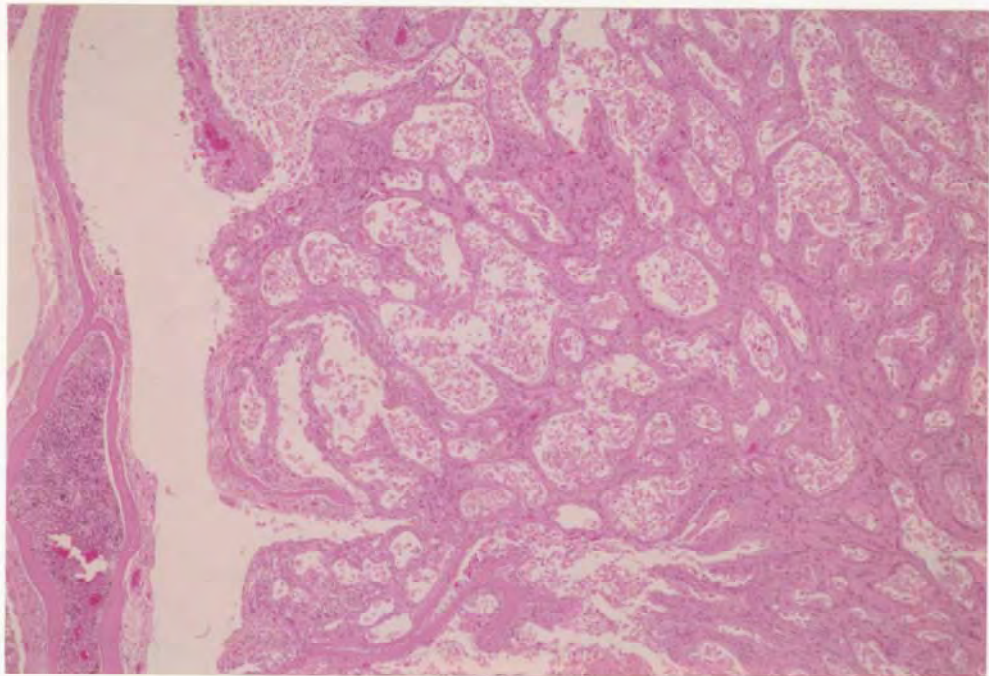
PHOTOGRAPH 19 PERITONEUM, NODULE(MULTIPLE)  
RAT, MALE, 5000ppm, ANIMAL NO.0063-1311



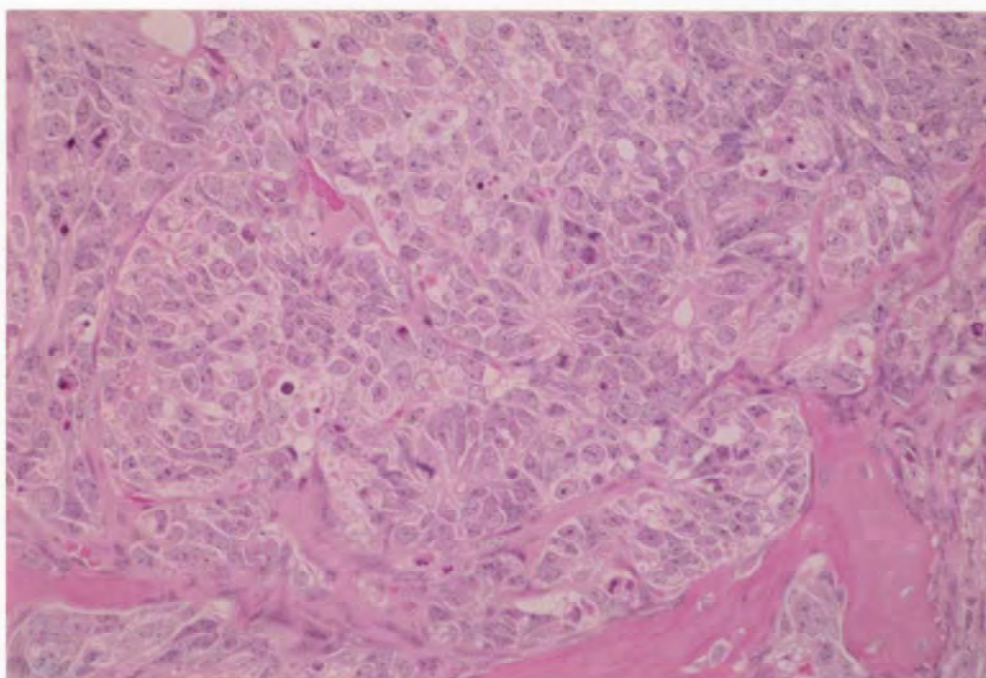
PHOTOGRAPH 20 PERITONEUM, MESOTHELIOMA  
RAT, MALE, 5000ppm, ANIMAL NO.0063-1327 (H.E., X150)



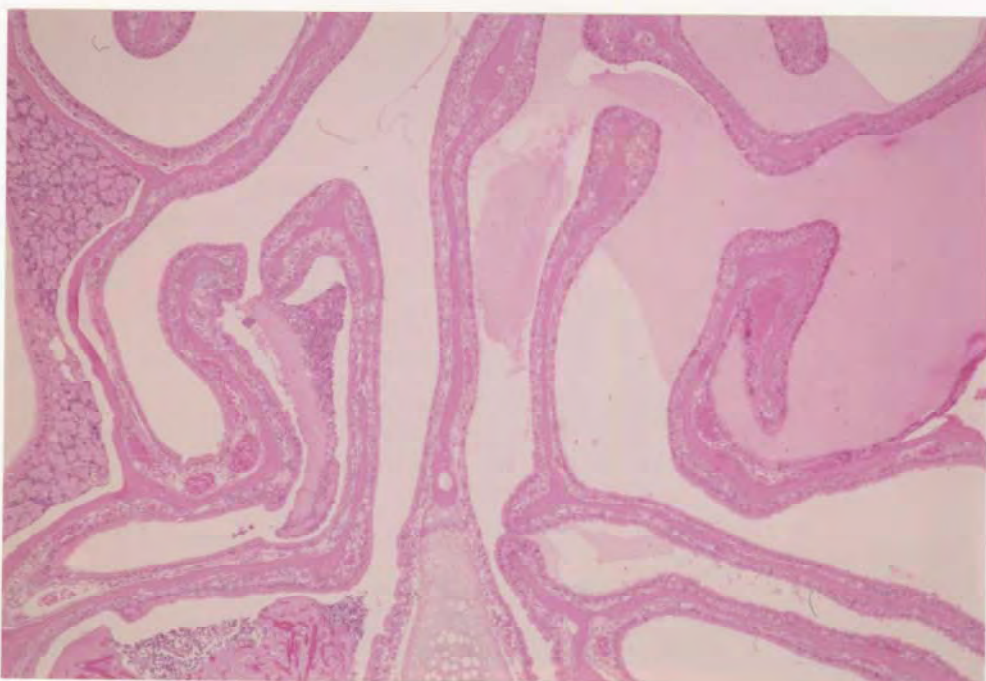
PHOTOGRAPH 21 KIDNEY, NUCLEAR ENLARGEMENT:PROXIMAL TUBULE  
RAT, MALE, 5000ppm, ANIMAL NO.0063-1316 (H.E., X300)



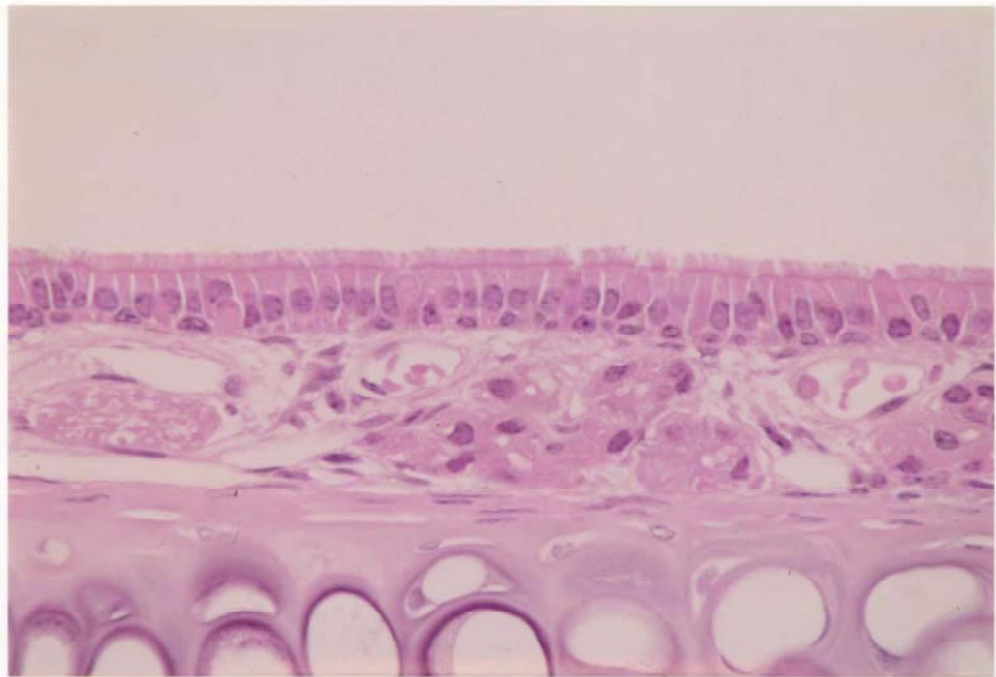
PHOTOGRAPH 22 NASAL CAVITY (LEVEL 2), ADENOCARCINOMA  
MOUSE, FEMALE, 8000ppm, ANIMAL NO.0064-2337 (H.E., X60)



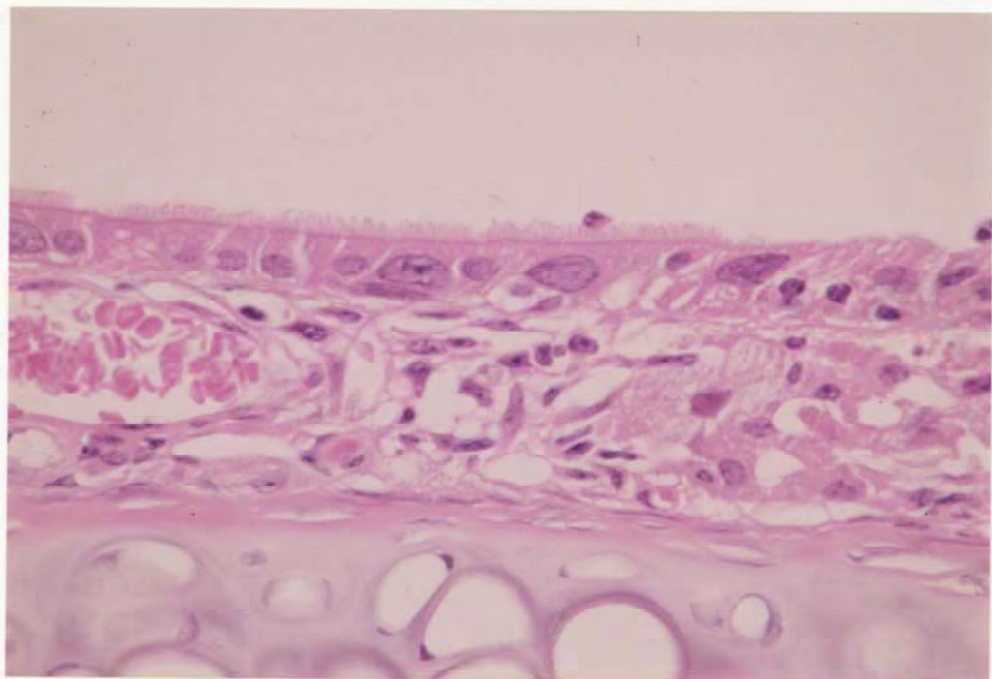
PHOTOGRAPH 23 NASAL CAVITY (LEVEL 3), ETHESIONEUROEPITHELIOMA  
MOUSE, MALE, 8000ppm, ANIMAL NO.0064-1304 (H.E., X300)



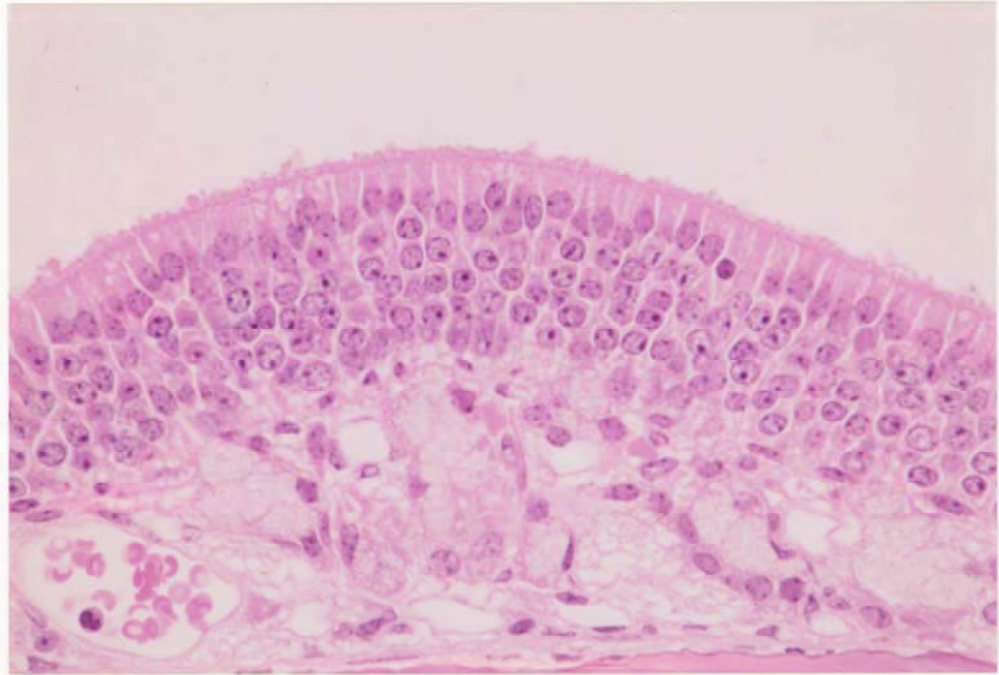
PHOTOGRAPH 24 NASAL CAVITY (LEVEL 3), RHINITIS(CATARRH),  
ATROPHY:OLFACTORY EPITHELIUM  
MOUSE, MALE, 8000ppm, ANIMAL NO.0064-1350 (H.E., X60)



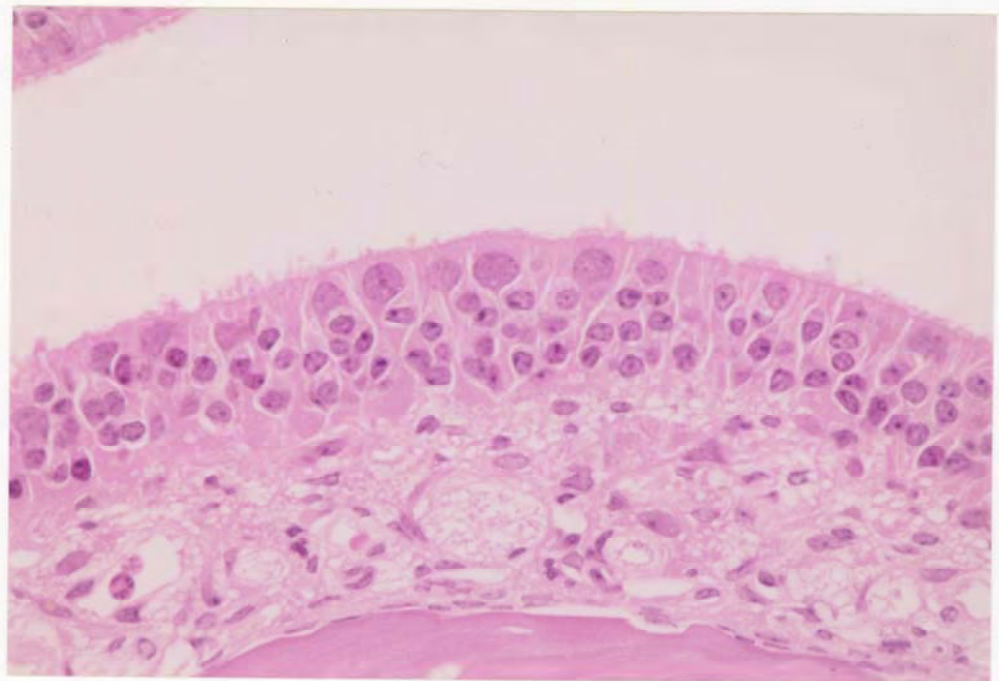
PHOTOGRAPH 25 NASAL CAVITY (LEVEL 2, NASAL SEPTUM,  
RESPIRATORY EPITHELIUM), NON-REMARKABLE  
MOUSE, MALE, CONTROL, ANIMAL NO.0064-1032 (H.E., X600)



PHOTOGRAPH 26 NASAL CAVITY (LEVEL 2, NASAL SEPTUM,  
RESPIRATORY EPITHELIUM),  
NUCLEAR ENLARGEMENT:RESPIRATORY EPITHELIUM  
MOUSE, MALE, 8000ppm, ANIMAL NO.0064-1307 (H.E., X600)



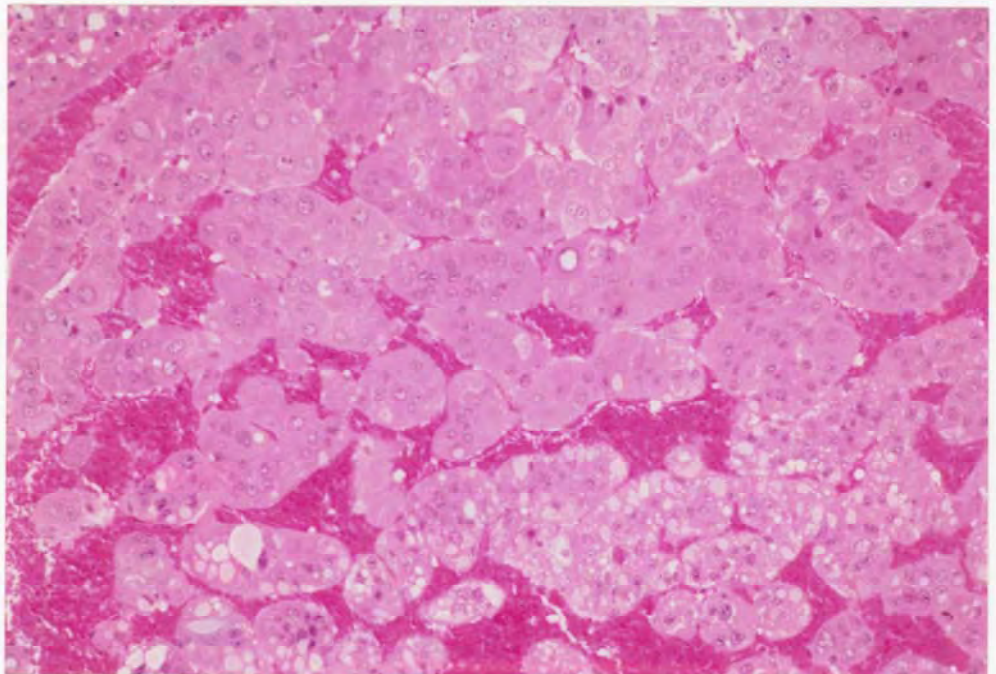
PHOTOGRAPH 27 NASAL CAVITY (LEVEL 3, NASAL SEPTUM, OLFACTORY EPITHELIUM),  
NON-REMARKABLE  
MOUSE, MALE, CONTROL, ANIMAL NO.0064-1032 (H.E., X600)



PHOTOGRAPH 28 NASAL CAVITY (LEVEL 3, NASAL SEPTUM, OLFACTORY EPITHELIUM),  
NUCLEAR ENLARGEMENT:OLFACTORY EPITHELIUM(SUPPORTING CELL),  
ATROPHY:OLFACTORY EPITHELIUM  
MOUSE, MALE, 8000ppm, ANIMAL NO.0064-1347 (H.E., X600)

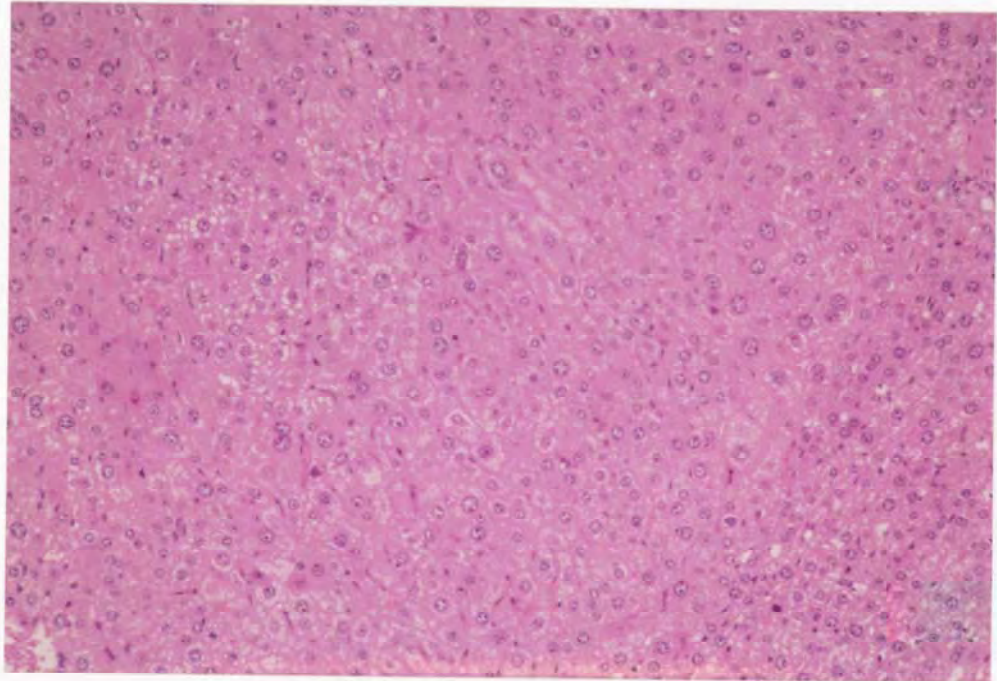


PHOTOGRAPH 29 LIVER, NODULE  
MOUSE, MALE, 8000ppm, ANIMAL NO.0064-1340

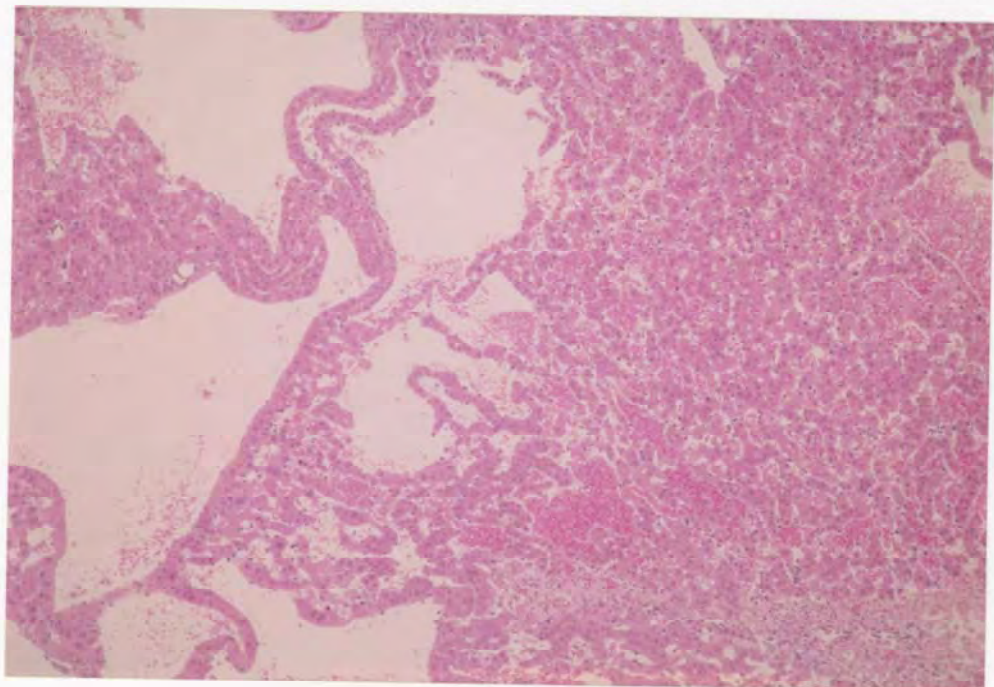


PHOTOGRAPH 30 LIVER, HEPATOCELLULAR CARCINOMA  
MOUSE, MALE, 8000ppm, ANIMAL NO.0064-1339 (H.E., X150)

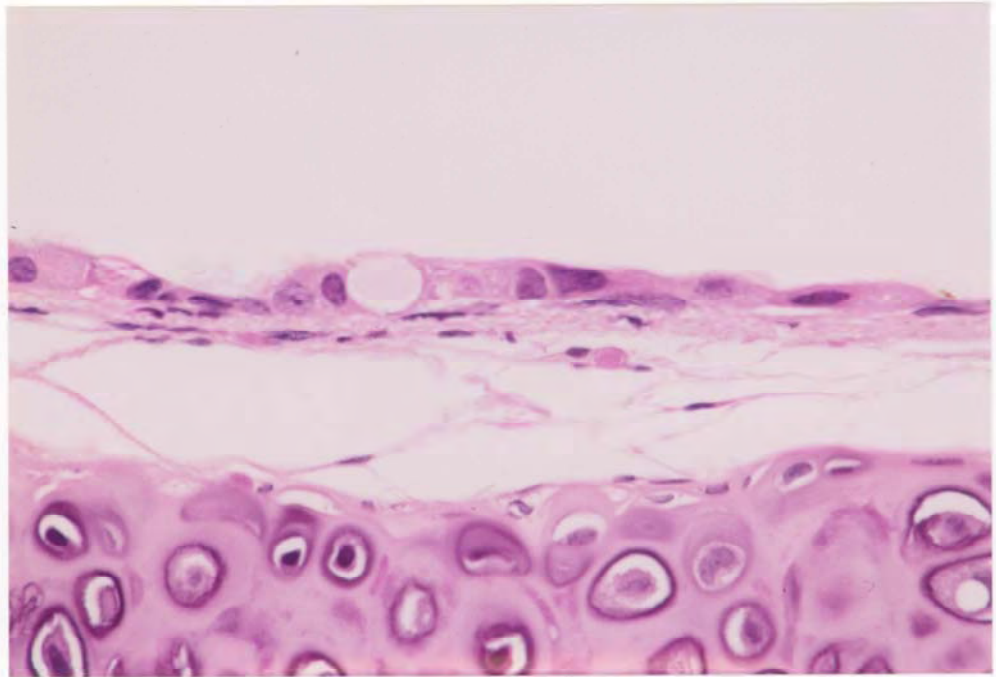




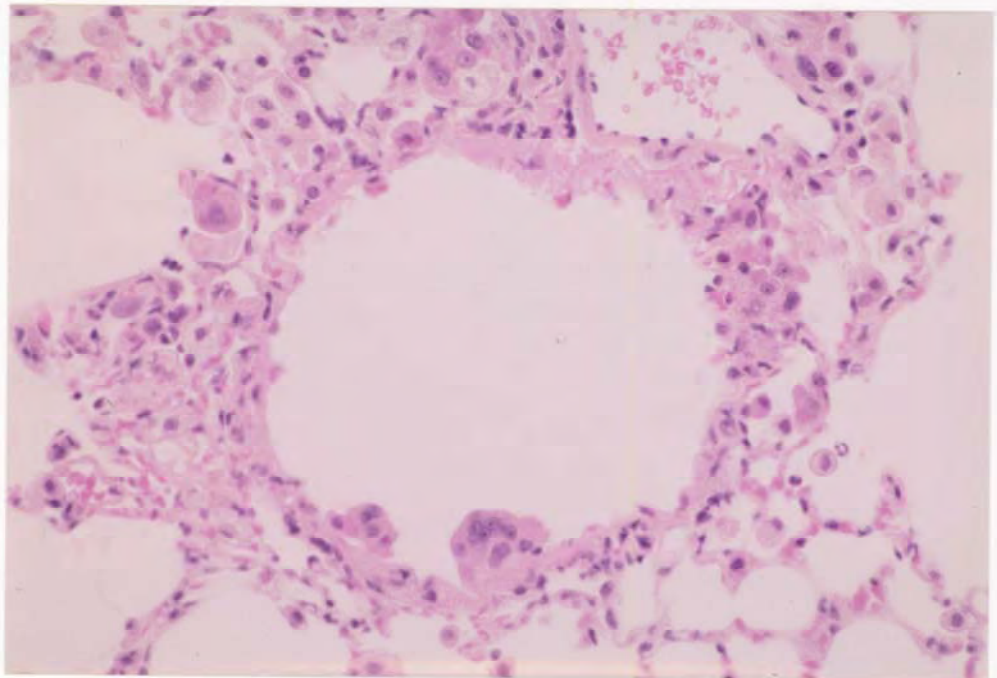
PHOTOGRAPH 31 LIVER, HEPATOCELLULAR ADENOMA  
MOUSE, FEMALE, 2000ppm, ANIMAL NO.0064-2203 (H.E., X150)



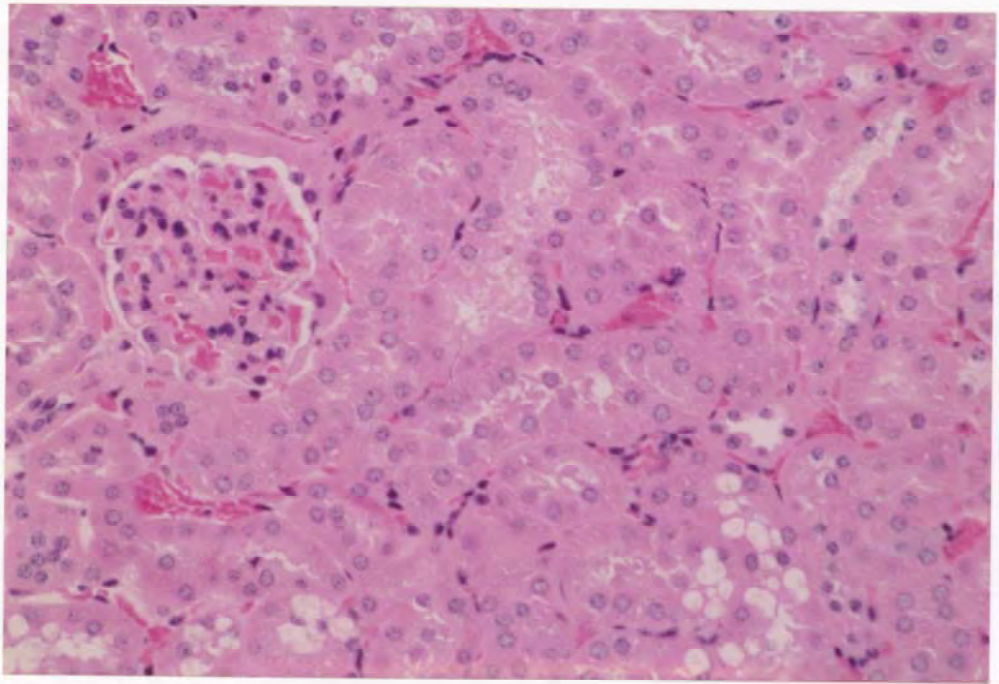
PHOTOGRAPH 32 LIVER, ANGIECTASIS  
MOUSE, MALE, 8000ppm, ANIMAL NO.0064-1324 (H.E., X60)



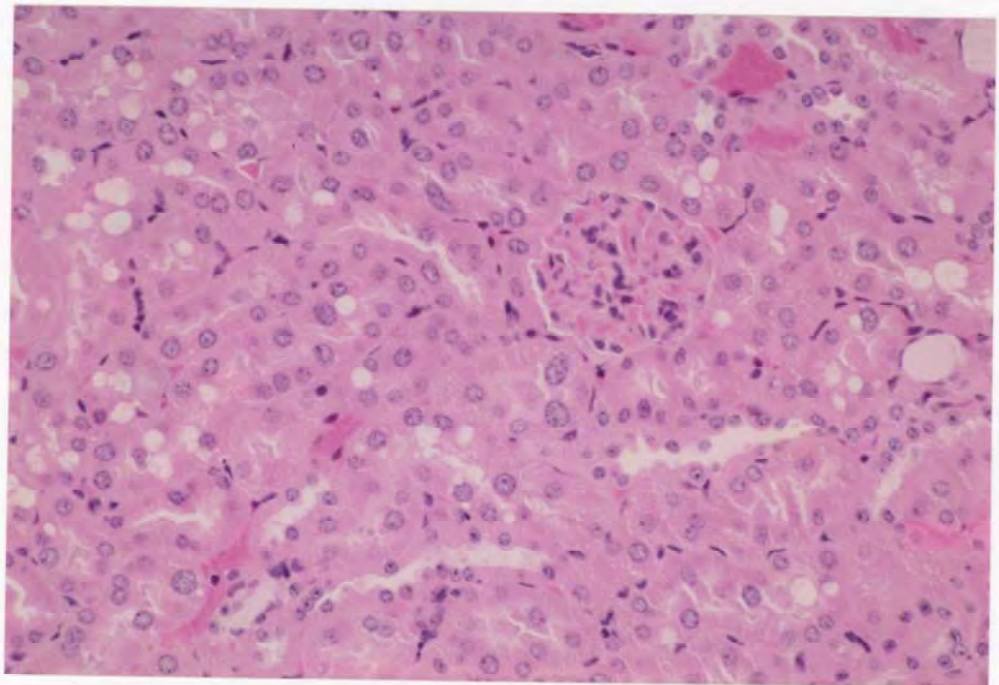
PHOTOGRAPH 33 TRACHEA, NUCLEAR ENLARGEMENT AND ATROPHY:EPITHELIUM,  
MOUSE, MALE, 8000ppm, ANIMAL NO.0064-1321 (H.E., X600)



PHOTOGRAPH 34 LUNG, NUCLEAR ENLARGEMENT AND ATROPHY:BRONCHIAL EPITHELIUM,  
ACCUMULATION OF FOAMY CELL  
MOUSE, MALE, 8000ppm, ANIMAL NO.0064-1310 (H.E., X300)



PHOTOGRAPH 35 KIDNEY, NON-REMARKABLE  
MOUSE, MALE, CONTROL, ANIMAL NO.0064-1013 (H.E., X300)



PHOTOGRAPH 36 KIDNEY, NUCLEAR ENLARGEMENT:PROXIMAL TUBULE  
MOUSE, MALE, 8000ppm, ANIMAL NO.0064-1302 (H.E., X300)